



# LYON Accommodation Guide

## 2022/2023



# Edito 2022

Dear International students,

As the start of the school year 2022 approaches, the question of housing becomes a priority in order to start the school semester/year in a serene and organized manner.

The main objective of the BBA INSEEC Lyon's housing service is to put in touch the housing actors of the city of Lyon and the future or current students.

Because settling in a new city and environment is one of the first steps to a successful integration, our service offers to assist parents and students in the search and selection of the best housing offers, often transmitted by our students and young graduates.

Wishing you a good search,

**Guillaume GARNOTEL,**  
Director BBA INSEEC LYON

BBA INSEEC Lyon campus does not have an on campus housing but assists international student in finding accomodation and have partners to facilitate research.

The Housing 2022 file gather various options for moving to the city of Lyon.

We also offer you a tenant's guide with the essential documents to provide to landlords and smart advice for any new accommodation.

We advise you to take all the necessary steps as soon as possible in order to be sure to find an accommodation in the desired conditions.



**The BBA INSEEC accepts no responsibility for the offers made. We remind you that the Housing Service is committed to helping you by listing all the rental offers that may correspond to the students of our school but has no obligation of result and cannot guarantee the quality and conformity of the offers. You will then be in charge of contacting the landlords, management companies or student residences that you will find in this file.**

# Where to stay?

## The neighborhoods

First and foremost, it is important to know where to look.

Here is a list of recommended areas that are both close to campus (and therefore close to downtown) and to public transportation.

Minutes are estimates of travel time to school.

- **La Presqu'île (2<sup>nd</sup> district)** - *Tramway T1 from Perrache*
- **The 7th district** : *Metro Jean Macé B*  
From Guillotière : 7 minutes on foot
- **The 6th district** - Bus from Foch: C14 and C4
- **The 3rd**: Tramway T1 from Part-dieu
- **8th district** : Metro D from Grange Blanche
- **Villeurbanne** : Tramway T1 from Charpennes or IUT Feyssine

# Search for your accommodation



Here are some useful links you can use to start your research...

Be careful with internet transactions, never commit yourself without having visited the apartment!

## Roommates (Shareflat):

- Shareflats: <http://www.recherche-colocation.com>
- Shareflats : <http://www.portail-colocation.com>
- Shareflats : <http://www.appartager.com>
- La Carte des Colocs : <https://www.lacartedescolocs.fr/>

## General french websites :

- Se loger : <http://www.seloger.com>
- Le bon coin : <http://www.leboncoin.fr>
- Logic-immo : <http://www.logic-immo.com>
- Le site immo : <http://www.lesiteimmo.com>
- Studyrama : [https://logement.studyrama.com/?a=recherche\\_offres&lieu=Lyon&choix=H&x=58&y=12](https://logement.studyrama.com/?a=recherche_offres&lieu=Lyon&choix=H&x=58&y=12)
- Particuliers à particuliers : <http://www.pap.fr/>



## Les régies

Les régies are private branches of housing agencies in Lyon. They offer private housing in all areas of the city.



Nevertheless, it is necessary to pay attention to their agency fees which can vary according to the cost of the monthly rent and be careful to validate the inventory of fixtures by yourself

Name	Address	Contact
<b>L'agence By Carron</b>	7, rue de la Platière 69000 Lyon	04.37.26.21.81 <a href="mailto:contact@agence-carron.com">contact@agence-carron.com</a> <a href="http://www.agence-carron.com">www.agence-carron.com</a> Application Smartphone: <b>Agence by Carron Immobilier</b>
<b>Presqu'île Gestion Immobilière</b>	105 Rue du Président Edouard Herriot 69002 Lyon	04 72 40 04 16 <a href="http://www.presquilegestion.fr">www.presquilegestion.fr</a>
<b>Centrale Immobilière (logements sur Villeurbanne)</b>	127 Avenue Thiers 69006 Lyon	04 72 72 03 69 <a href="mailto:location@rci69.fr">location@rci69.fr</a>
<b>NEOWI Régie ADB</b>	9 Place Raspail 69007 Lyon	04 78 83 15 21 <a href="mailto:elodie.r@neowi.com">elodie.r@neowi.com</a> <a href="http://www.neowi.com">www.neowi.com</a>

## Student residences

Private student residences are part of a group of residences present everywhere in France. Their strong points are the ease of reservation (possible on the internet), the location of the residences (close to the student establishments), and the services offered by them.

This list is not exhaustive, it is possible that you are interested in other residences in Lyon.





## Résidence Nexity Studéa LYON



18 résidences étudiante sur Lyon :

<https://www.nexity-studea.com/locations-etudiantes/lyon>

### PARTENARIAT INSEEC U.

- Un accès prioritaire aux logements
- Un accès au service transfert de résidence sans frais administratifs et sans double loyer
- 25% de réduction sur les frais administratifs



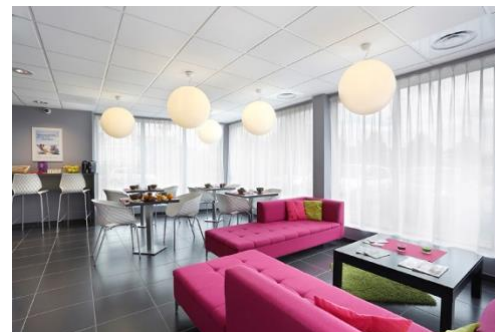


## NEMEA

Residence Lyon 8, 218 Boulevard Pinel - Lyon 8 (15 minutes by transport from campus) – Studio

Contact : Stéphanie MARTINEZ - 06 72 62 69 62 – [lyon8@nemea.fr](mailto:lyon8@nemea.fr)

Monthly rent	starting 490€
Services	Free WiFi Laundry Common room with sports equipment Car and bicycle parking Breakfast service



## LES ESTUDINES

Residence Saxe Gambetta, 34 grande rue de la Guillotière - Lyon 7ème (7 minutes walk from the campus) - Studio / T1 / T2

Contact : Leila BENAIZ - 04 72 71 91 92 - [lyon.saxe@estudines.com](mailto:lyon.saxe@estudines.com)



Monthly rent	Starting 551€
Services	Free WiFi Laundry Equipped kitchen Linen kit Crocery kit Access control Reception from 7am to 7:30pm

Residence Le Clip - 79 cours de la Liberté - Lyon 3rd (10 minutes walk from the Campus) - Studio / T1 / T2

Contact : Stéphane BANOS – 04 78 60 92 38 – [lyon.leclip@estudines.fr](mailto:lyon.leclip@estudines.fr)



Monthly rent	Starting 505€
Services	Free WiFi Fully equipped kitchen Reception from 9am to 6pm Laundry kit Access badge

*Other residences are also offered by LES ESTUDINES.*

Central Park Residence - 100 rue Jaboulay - Lyon 7ème (13 minutes walk from the Campus) - Studio / T2 / T3

Application fees at 150€ on August 1st and 350€ on September 1st

Contact : Antoine HEBBEN – 07 71 86 53 70 – [commercial@gestetud.fr](mailto:commercial@gestetud.fr)

Monthly rent	Starting 520€
Services	Free WiFi Bedding kit Laundry Television Laundry Equipped kitchen Parking Common room Residence manager



Residence Le Coryphée - 3 Rue Xavier Privas - Lyon 8ème (15 minutes by transport from the Campus) - Studio / T2 / T3 / T4

Contact : Antoine HEBBEN – 07 71 86 53 70 – [commercial@gestetud.fr](mailto:commercial@gestetud.fr)

Monthly rent	Starting 480€
Services	Free WiFi Bedding kit Laundry Television Laundry Equipped kitchen Parking Common room Residence manager



*Other residences are also offered by GESTETUD.*

# STUDAPART PLATFORM

INSEEC and STUDAPART have set up a partnership in order to facilitate students' search for accommodation.

This platform, thanks to a code given by the INSEEC housing service at the time of your registration, lists the student residences and apartments dedicated to students (real estate agencies and individuals).

You just have to connect to the following link: <https://inseec.studapart.com/fr/>

The screenshot displays the INSEEC U. STUDAPART website interface. On the left, a sidebar contains search filters: 'Localisation' with a dropdown set to 'INSEEC Lyon'; 'Durée du séjour' with 'A partir du' and 'Au' fields; 'Fourchette de prix (€)' with a price range slider from 0 to 2500; 'Nombre de pièces minimum' with buttons for Studio, 2, 3, 4, and 5+; 'Surface minimale' with an input field in m²; 'Moins de filtres'; 'Capacité d'accueil minimum' with buttons for 1, 2, 3, 4, and 5+; and 'Type d'annonce' with checkboxes for 'Logement entier (208)', 'Chambre dans une colocation (5)', 'Chambre chez l'habitant (6)', and 'Logement contre services (0)'. The main content area shows '219 résultats' and a list of three accommodations. Each listing includes a photo, title, location, price, and a 'VOIR L'ANNONCE' button. The listings are: 1. 'Studea Garibaldi Berthelot' in Lyon - 69007, starting at 500€ per month. 2. 'Studea Lyon Ouest 2' in Lyon - 69009, starting at 440€ per month. 3. 'Studea Montchat' in Villeurbanne - 69100, starting at 449€ per month. All listings are for 1 person, include services, and are studio-type accommodations. They are all marked as 'Résidence étudiante' and 'Visité et vérifié'. A 'Créer une alerte' button is located at the top of the sidebar.

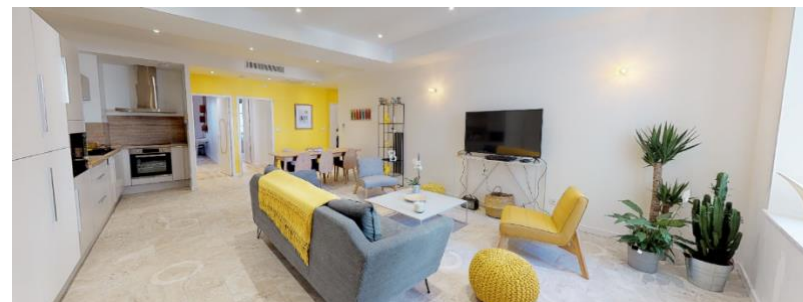
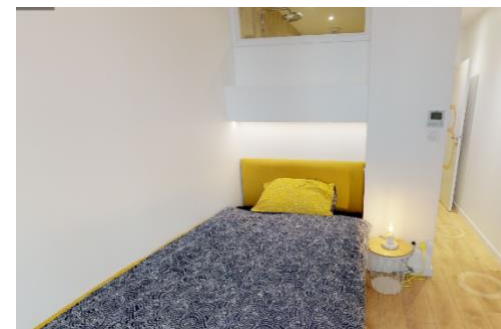


## COLODGE - STUDENT ROOMMATE

Colodge offers various shared apartments at the foot of the Insee Campus.

Contact : Patricia BOUCHERY – 06 37 94 93 27 – [patricia.bouchery@colodge.fr](mailto:patricia.bouchery@colodge.fr)

Monthly rent	starting 650€
Services	Free WiFi Fully equipped kitchen Laundry and sports area in the basement Bathroom and individual toilet Fridge and individual closet



*Other roommates are also proposed by Colodge in Lyon.*



# Lyon public transport (TCL)

Lyon has a bus, tramway and metro network operating from Monday to Saturday from 5am to 12:30pm and on Sundays from 6am to 12:30am.

There are 4 metro lines, 2 funicular lines, 5 tramway lines and more than 120 bus lines.

Fares:

*CAMPUS 32,50€/month : This is a subscription specially designed for students, it allows unlimited travel on the entire TCL network.*

*Single ticket 1,90€ : For all, valid for one hour on the whole TCL network.*

*Booklet of 10 tickets - normal rate 13,20€ : For all, valid on the whole TCL network.*

*Ticket on the bus 2,20€ : For all, valid for one hour on the whole TCL network.*

*Booklet of 10 student and school tickets 14,80€ : Valid for one hour, only for students on the whole TCL network. ATTENTION : You have to buy this book of 10 tickets in special sales points or in TCL agencies, it is not possible to buy them on the terminals.*

*Ticket liberté 2h 3,10€ : For all, valid for two hours on the entire TCL network.*

*One-day ticket 6€ : For everyone, valid for one day on the entire TCL network.*

*3.10€ evening ticket : Valid from 7pm until the end of the service, on the entire TCL network.*

## **Commercial agencies :**

- Bellecour
- Gorge de Loup
- Grange Blanche
- Part Dieu
- La Soie
- Givors



*information space: ALLO TCL 04.26.10.12.12 (price of a local call). It is possible to check your itinerary on the website [www.tcl.fr](http://www.tcl.fr). Network maps are available free of charge at TCL ticket offices.*

# The Practical Guide

## What is conventional housing?

This is a legal rental system whereby the owner signs an agreement with the State in exchange for a tax benefit and, if applicable, for assistance in building or renovating a property. The agreement gives the right to personalized housing assistance (APL) for tenants who meet certain conditions.

## What is the ALS?

It is the most common form of assistance given to students. The Allocation de Logement à caractère Social (ALS) can only be paid if the accommodation is not subsidized. It can be a room in a hostel or university residence, a studio, an apartment or a house.

The housing can also be empty or furnished. To receive the ALS, you must meet the following conditions: you must be a tenant in a dwelling that meets minimum standards of surface area (a minimum of 9 m<sup>2</sup> if you are alone, 16 m<sup>2</sup> for a couple, 7 m<sup>2</sup> for each additional occupant) and comfort (a supply of drinking water, heating, a sink and a toilet).

## What is the APL ?

The « Aide Personnalisée au Logement » is a student housing aid. Every international student studying in France are eligible for housing benefit. APL are paid directly by the CAF to the landlord; the tenant only pays the landlord the remaining balance. In general, the APL files are constituted at the initiative of the landlord or the manager. But the application, from the point of view of the CAF, is your responsibility: check the content of the file and especially if it is sent in time. Unlike the APL, the ALS is in principle paid to the tenant. However, it is possible to choose a direct payment to the landlord. However, once this option has been chosen, the agreement of the landlord is required to terminate the payment.

## What is the Caf?

Students can, under certain conditions, receive assistance from the " Caisse d'allocations familiales " for housing benefits.

The amount of aid varies according to your resources, the rent of the accommodation, the number of roommates, the nature of the accommodation, the place of residence...

Resources: the higher your income, the lower your aid. The income taken into account is that of the calendar year preceding the exercise of the [www.caf.fr](http://www.caf.fr) .

Every July 1st, the Caf asks all the beneficiaries for their income of the previous year. The salaries you would have received during school and university vacations as well as the alimony paid by your parents must be declared. Scholarships from higher education do not have to be declared if they are not taxable. On the other hand, you should know that if you rent a furnished apartment, the Caf will only take 2/3 of the rent to calculate the amount.

The rent: the lease and the rent receipts must be in your name and not in your parents' name. It's mandatory to have a french bank account if you would to received your housing benefit. BBA INSEEC will help you to open a french bank account the first day of class during the orientation session.

If you are sharing a home with someone else, the rent scale is much less favorable.

## The payment of aid

The files are processed and paid within 6 to 8 weeks (except for incomplete or badly filled out files).

Please note that there is no payment for the first month of occupancy, and the aid is paid "in arrears": you should not expect any payment two months after your entry into the premises. However, there are two exceptions:

- For the APL, if you live in a home.

- For the APL and

ALS: if your file is transferred without a break in rights (for example, if you leave your home on September 30 and file a file for your new home rented as of October 1).

If you are under 25 years old, you can benefit from this aid on a personal basis. This aid cannot be combined with family benefits for you (paid to your parents). If your parents receive family benefits or RMI for you, they will no longer receive them as soon as you receive housing assistance.

Before you apply, compare what you will be able to get and what your parents will lose. However, you do not have to be separated from your parents' tax household to receive housing assistance..



### **And during the summer (July-August)?**

The ALS is suspended for all students on July 1 of each year, unless they send a certificate to the Caisse d'Allocations Familiales indicating that they are keeping the accommodation all summer. This measure is intended to limit false payments during periods when students are likely to move.

### **Procedures and documents to be provided**

Applications for housing subsidies must be made to the Caf where the accommodation concerned is located. For the ALS, the file must be prepared and sent by the student himself. For the APL, the file is generally provided and sent to the Caf by the landlord.

The documents to provide are the following:

- The declaration of resources for the year n-1 or n-2 (tax notice of the income received by your family)
- The lease (if it exists) or rental contract: original or certified copy
- The rent receipt for the month in which you moved in: original or certified copy (if you live with a roommate, one receipt per roommate; if you live in a furnished apartment, you must indicate this on your application and your receipt must show all your expenses)

- The accommodation certificate if you are living in a university residence or hostel (this certificate is issued by the manager of your accommodation)

**Good to know :**

Fill out the files with the utmost care. If the application is not filled out correctly or is incomplete, there may be a delay of several months in payment.

To find out more or to estimate the amount of aid that may be awarded to you, visit the CAF.fr website for your place of study or refer to our section entitled "Online calculation "

- A photocopy of your family record book, your identity card or your valid passport on both sides (this replaces the civil status form which has been abolished).
- A bank statement (RIB), postal or savings bank statement
- And all proof of your current situation (student card, school certificate, residence permit)



# Additional information

## Caf

Caf Headquarters :  
67, boulevard Vivier Merle  
69003 Lyon

Phone: 0 810 25 69 80

To write to them:

Caisse d'Allocations Familiales du Rhône  
67 boulevard Marius Vivier Merle  
69409 Lyon cedex 03

- Always remember to include your receipt number in your letters.
- Always ensure that your forms are completed, signed, and accompanied by the required supporting documents.

Complete the forms with a black ballpoint pen and send them photocopies of your documents in black and white

## Tips and advice

Prepare in advance the complete file that you will give to your future landlord when the time comes. Indeed, there are many requests for housing.

In addition, there are housing subsidies for those with little income or no guarantor: <https://locapass.actionlogement.fr/>

Don't forget to notify the various organizations of your change of address (EDF, VEOLIA, CPAM, Préfecture, Mairie, etc.)

# **INTERNATIONAL RELATION OFFICE**

PHONE: +33 4.78.27.50.17

E-MAIL: [wwegorowska@inseec.com](mailto:wwegorowska@inseec.com)